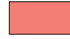







Tavola PUP: Inquadramento Strutturale prima dell' aggiornamento

Reg.delib. n° 287 del 20/02/2009 prot. n° 79/09D

Variante PRG: deliberazione n° 24 in data 05 Agosto 2008

- | | | |
|--|--|---|
|  Insediamenti storici |  Foreste demaniali e boschi di pregio | 1.d Aree agricole e silvo-pastorali artt. 7-8 |
|  Localizzazione aggiornamento |  Aree boscate | |
| |  Pascoli | |
| |  Aree agricole di pregio | |
| | | |

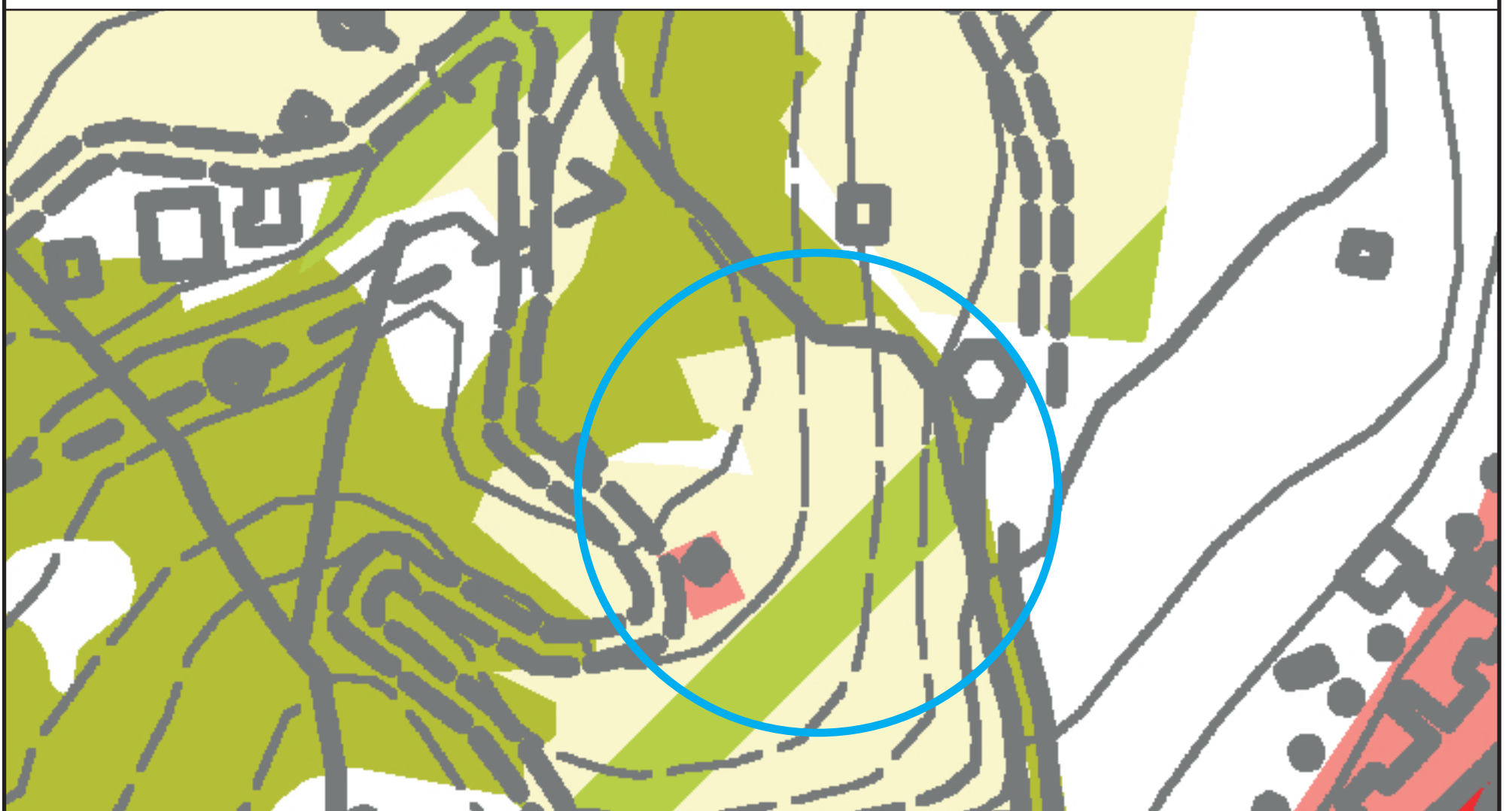


Tavola PUP: Inquadramento Strutturale aggiornato

Reg.delib. n° 287 del 20/02/2009 prot. n° 79/09D

Variante PRG: deliberazione n° 24 in data 05 Agosto 2008

- | | | |
|--|--|---|
|  Insediamenti storici |  Foreste demaniali e boschi di pregio | 1.d Aree agricole e silvo-pastorali artt. 7-8 |
|  Localizzazione aggiornamento |  Aree boscate | |
| |  Pascoli | |
| |  Aree agricole di pregio | |
| | | |